



Connecticut Health Plan

Public Dashboard

Reporting Period: July 2021- June 2022 (Current Period) ; July 2020 – June 2021 (Prior Period)

Includes all covered plan participants (Active, Non-Medicare Retirees and Medicare Retirees) unless otherwise noted



Table of Contents

Page 3 – Enrollment (Actives)

Page 4 – Enrollment (Retirees)

Page 5 – Plan Paid By Setting

Page 9 – Plan Paid By Age Band and Gender

Page 13 – Emergency Room Visits

Page 17 – Top 15 Drugs

Page 21 – Top 15 Prescription Drug Disease Indications

Page 25 – Top 15 Diagnosis Categories for Medical Claims

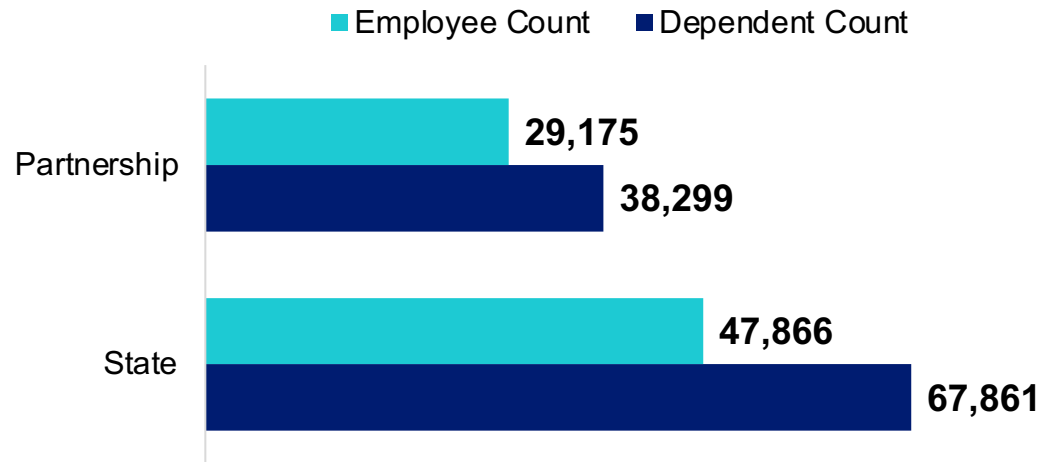
Page 29 – Distribution of Claims By Membership



Enrollment: Actives

July 2021 – June 2022

Average Employee and Dependent Counts



Average Employee and Dependent Counts

Line of Business	Employee Count	Dependent Count	Total Count	PEPM ¹
Partnership	29,175	38,299	67,474	\$1,428.05
State	47,866	67,861	115,727	\$1,434.98
Total	77,040	106,161	183,201	\$1,432.36

¹ Per Employee Per Month

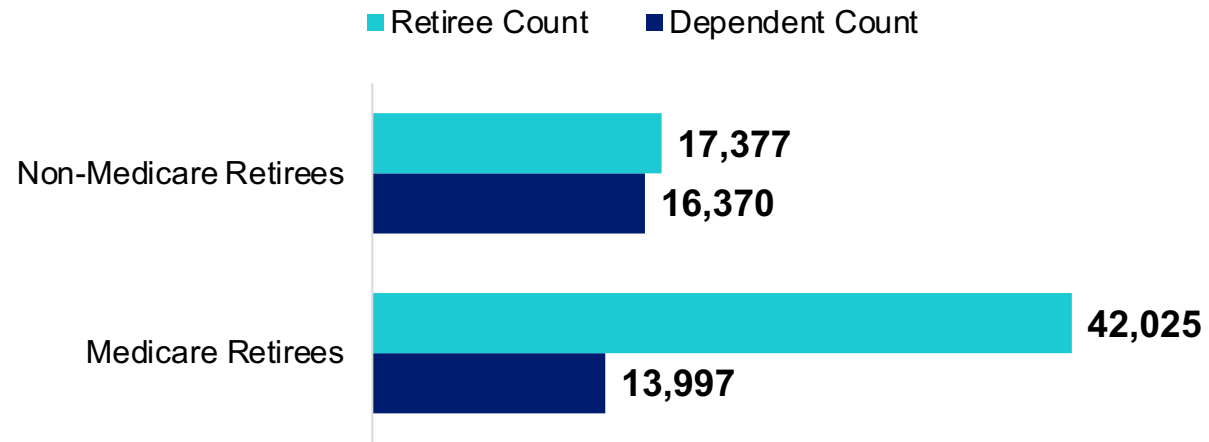
² Partnership is higher due to membership located in counties that have a higher average cost of care, Regional pricing adjustments account for this disparity.



Enrollment: Retirees

July 2021 – June 2022

Average Retiree and Dependent Counts



Average Retiree and Dependent Counts				
Status	Retiree Count	Dependent Count	Total Count	PEPM ¹
Non-Medicare Retirees	17,377	16,370	33,747	\$1,580
Medicare Retirees	42,025	13,997	56,023	\$1,303

¹ Per Employee Per Month – these numbers include State and Partnership retirees. As Partnership retiree membership increases, they will be reported separately.

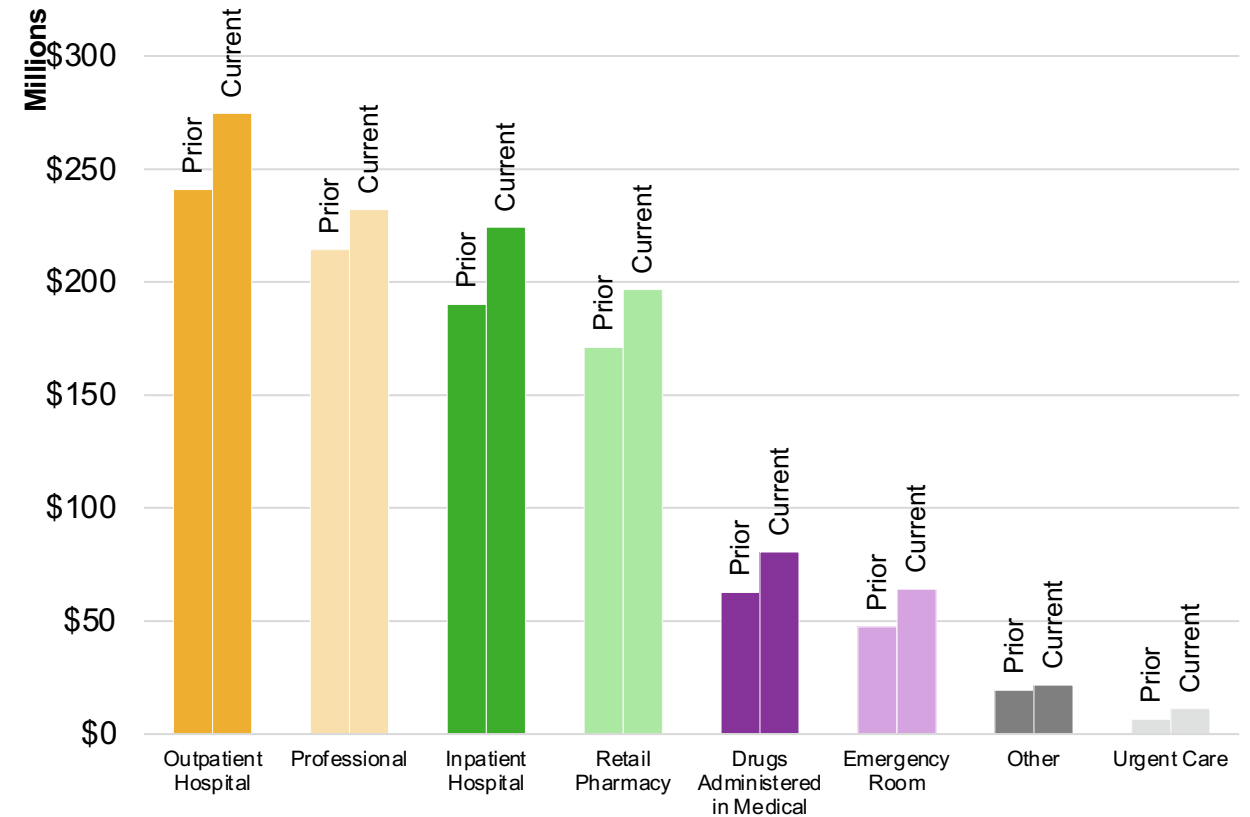
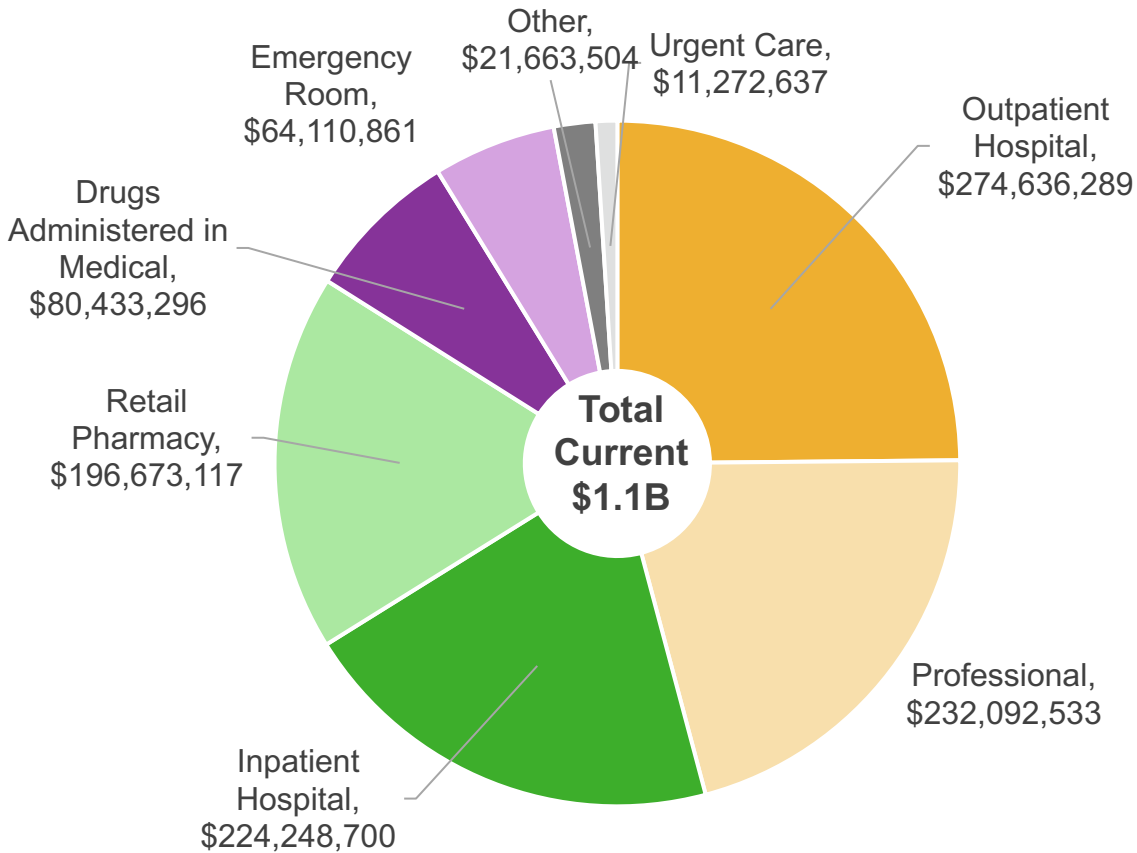


Plan Paid By Setting – State Plan Active Population

July 2021 – June 2022 (Current Period) ; July 2020 – June 2021 (Prior Period)

Current vs Prior

Total: Prior – \$952m Current – \$1.1B



Other includes ancillary claims such as Home Health, Hospice, Durable Medical Equipment (DME), Ambulance etc.

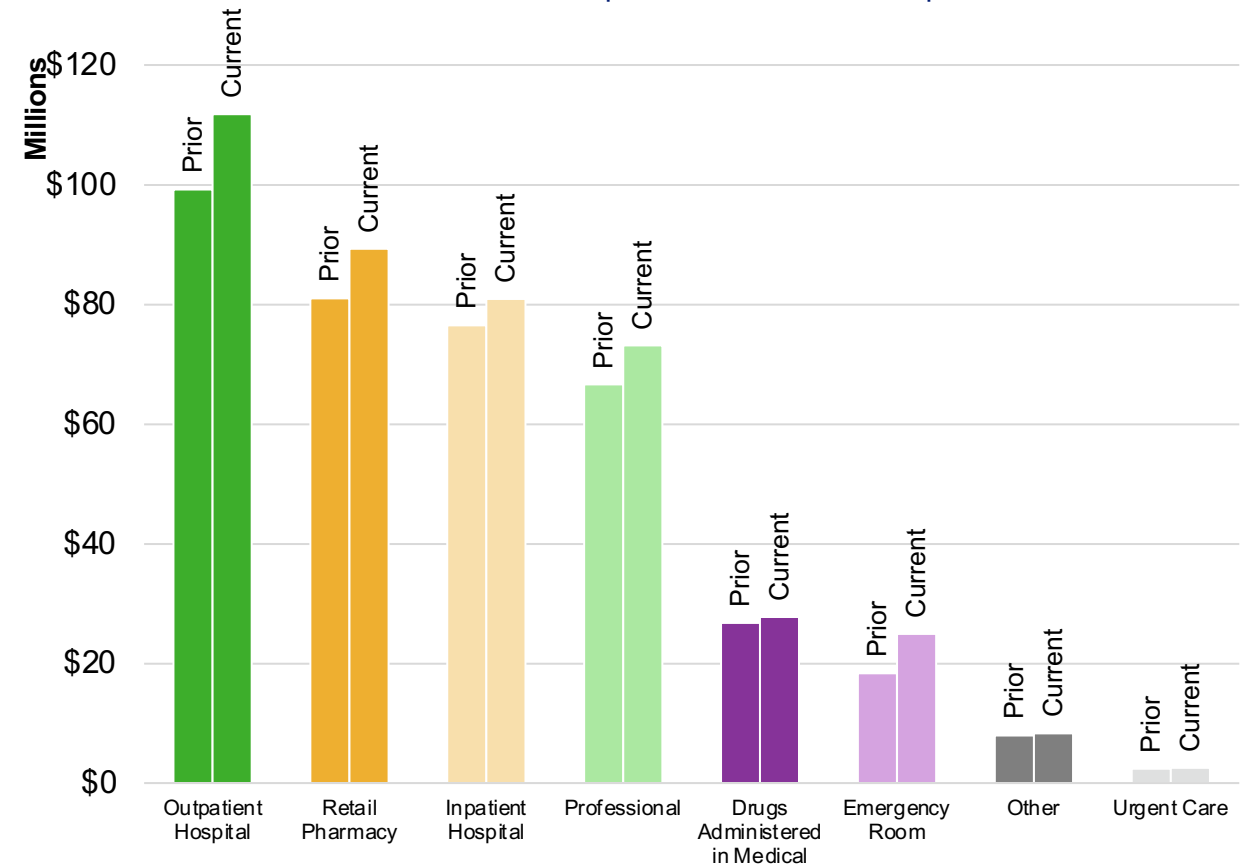
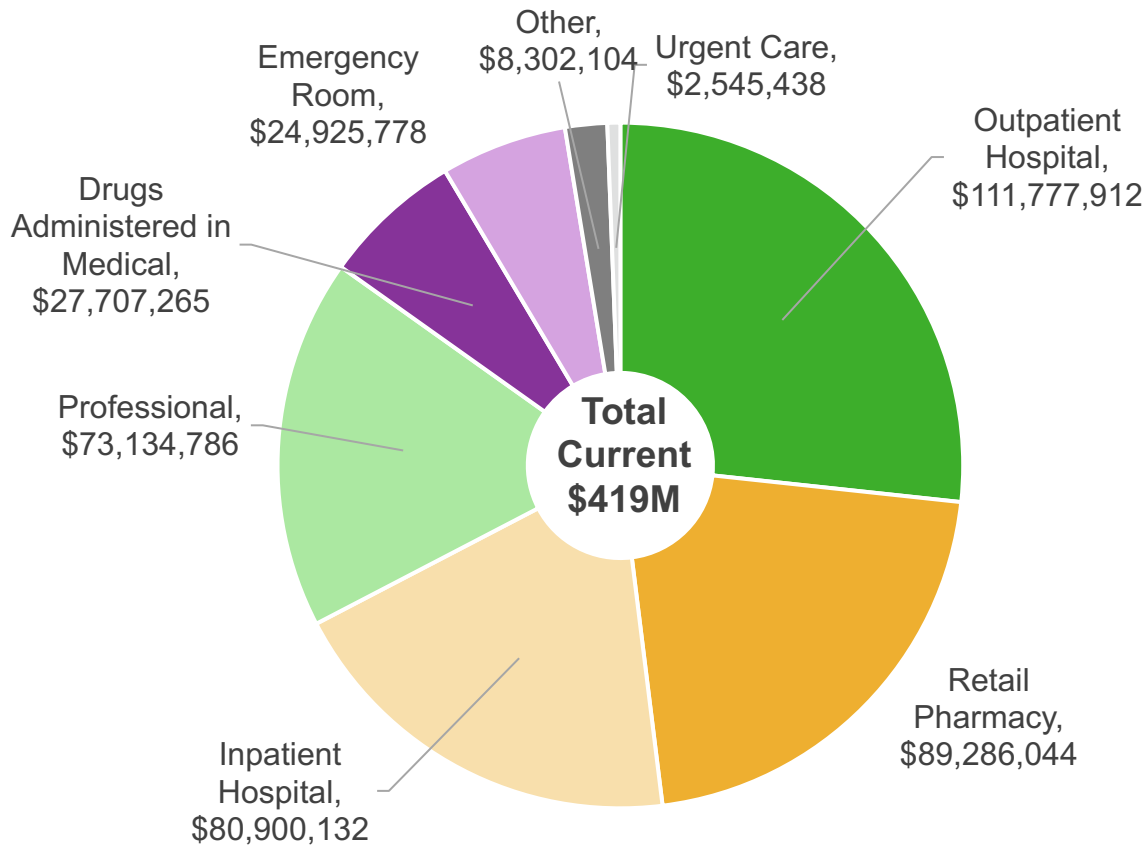


Plan Paid By Setting – State Plan Non-Medicare Retirees

July 2021 – June 2022 (Current Period) ; July 2020 – June 2021 (Prior Period)

Current vs Prior

Total: **Prior – \$379M** **Current – \$419M**



Other includes ancillary claims such as Home Health, Hospice, Durable Medical Equipment (DME), Ambulance etc.

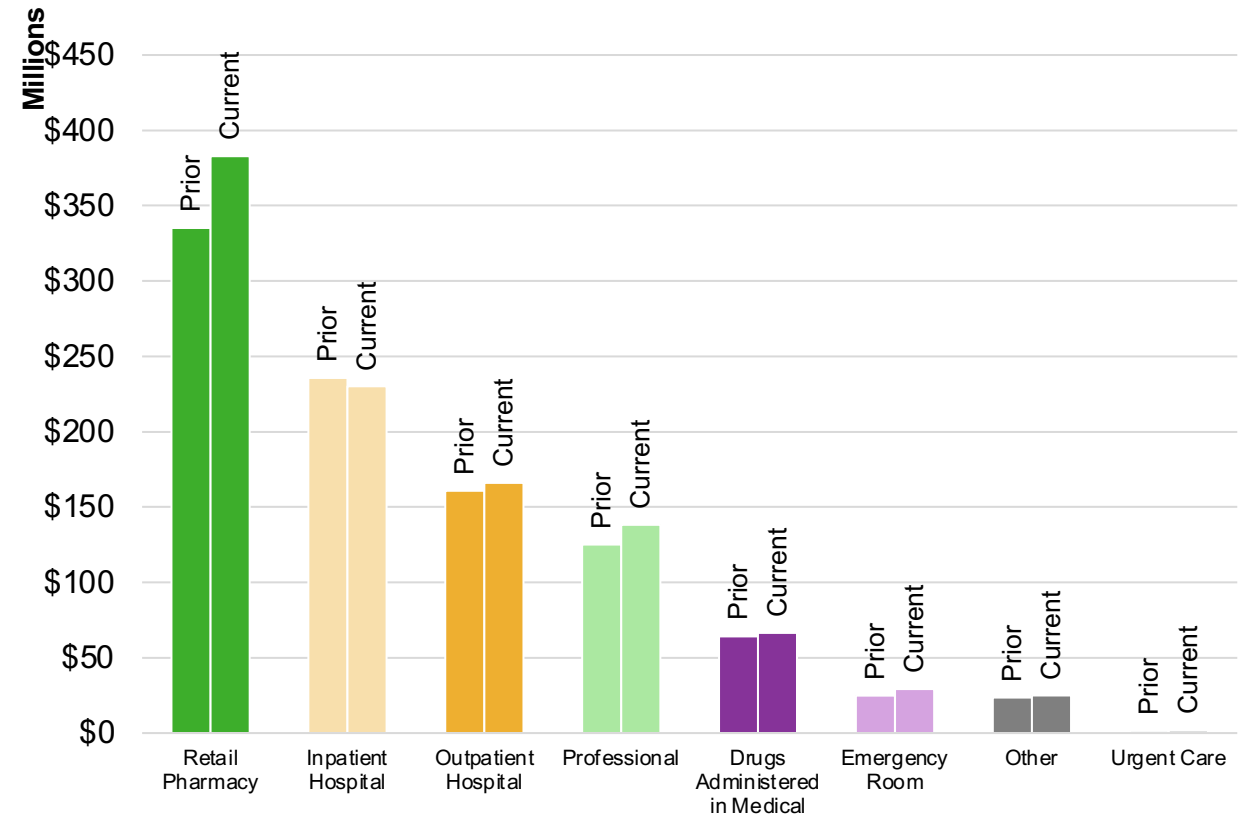
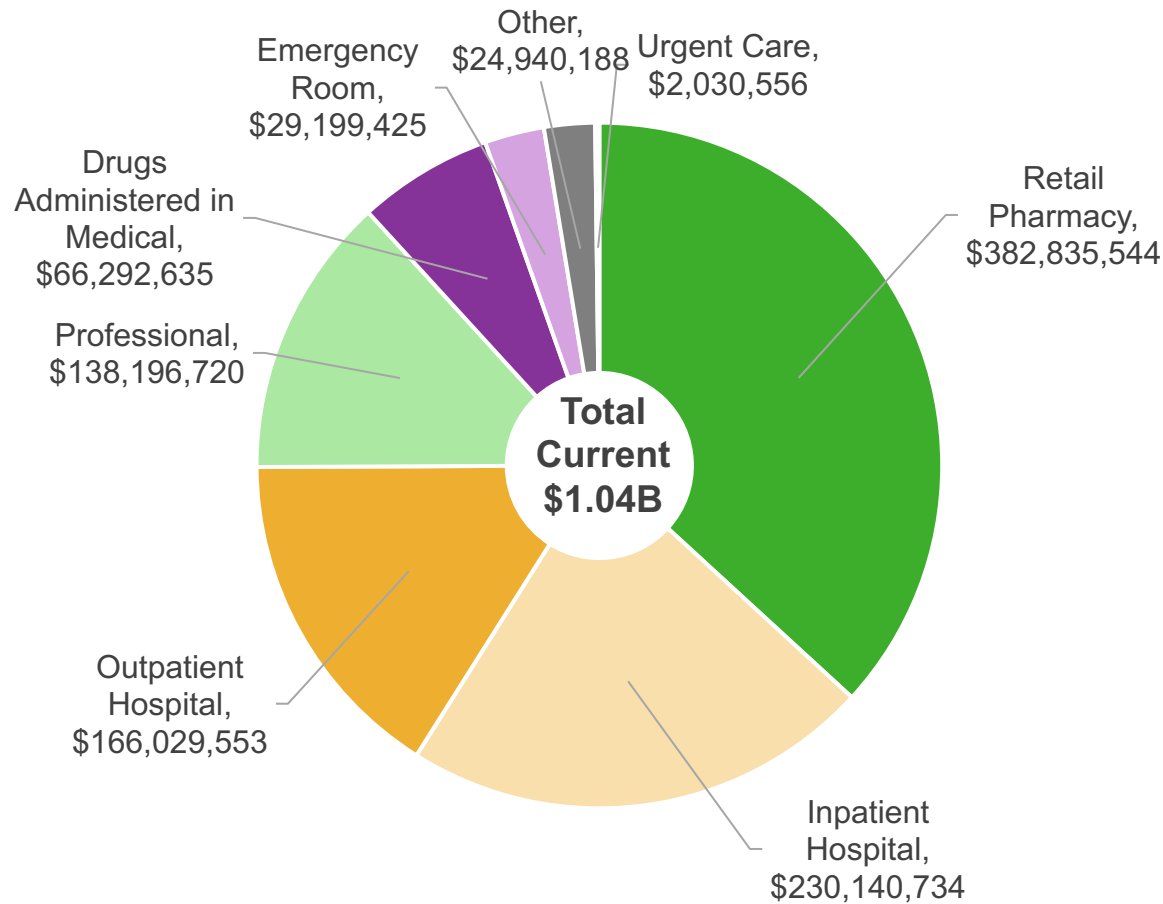


Plan Paid By Setting – State Plan Medicare Retirees

July 2021 – June 2022 (Current Period) ; July 2020 – June 2021 (Prior Period)

Current vs Prior

Total: **Prior – \$971M** **Current – \$1.04B**



Other includes ancillary claims such as Home Health, Hospice, Durable Medical Equipment (DME), Ambulance etc.

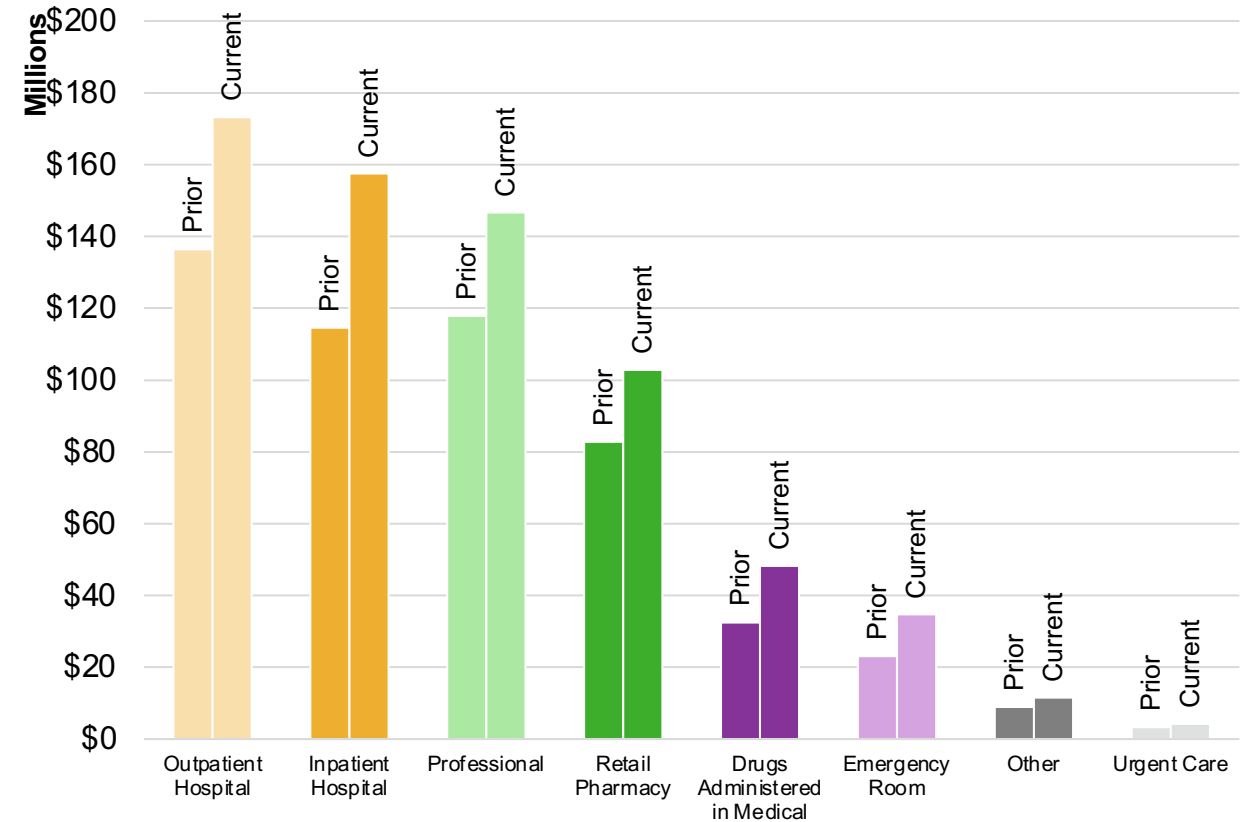
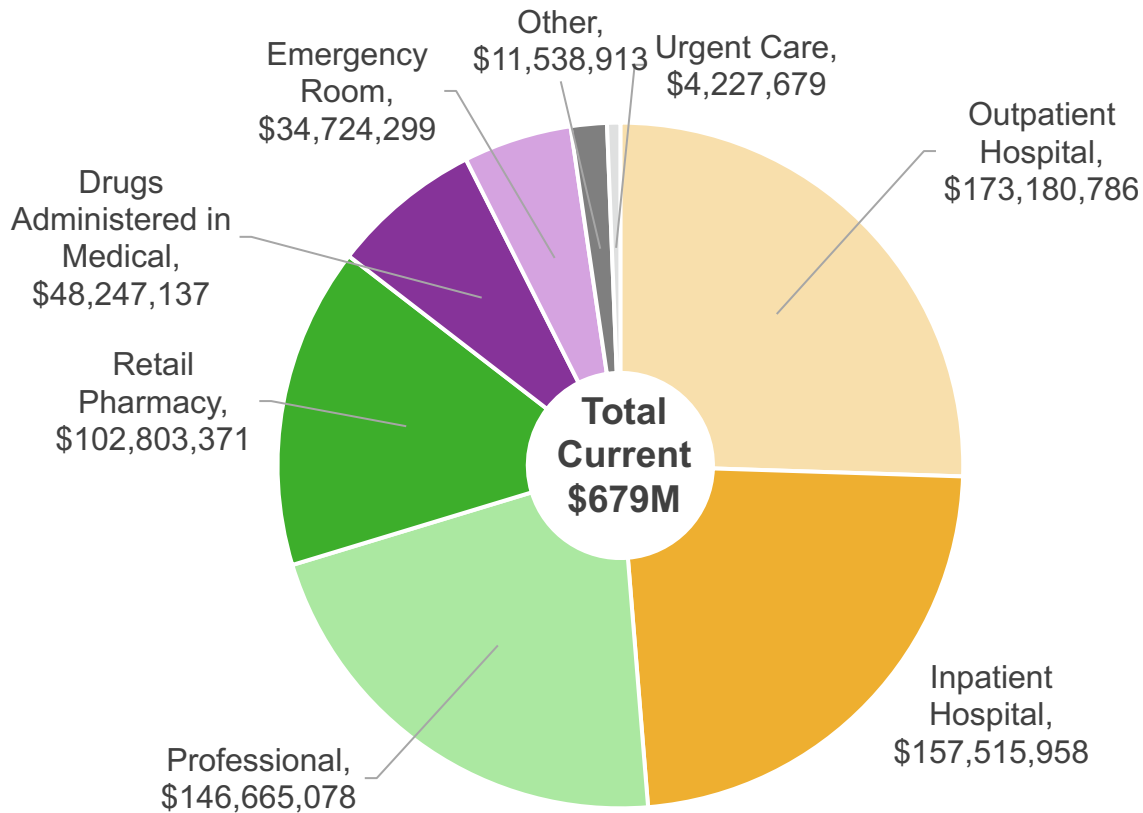


Plan Paid By Setting – Partnership Plan (includes retirees)

July 2021 – June 2022 (Current Period) ; July 2020 – June 2021 (Prior Period)

Current vs Prior

Total: **Prior – \$519M** **Current – \$679M**

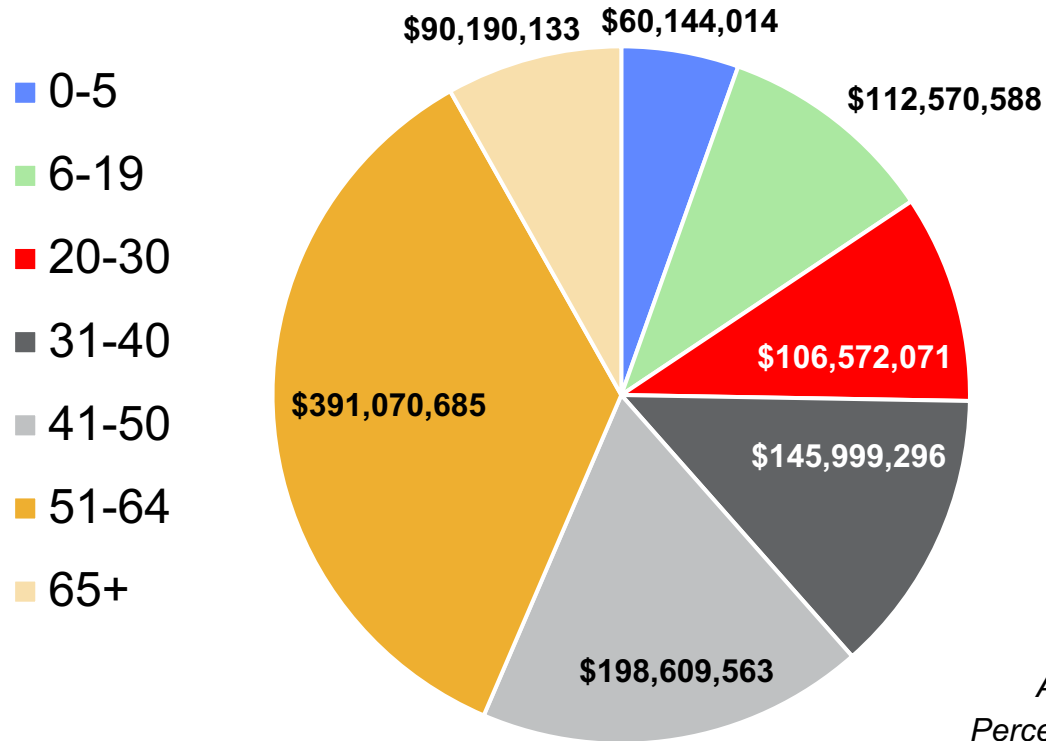


Other includes ancillary claims such as Home Health, Hospice, Durable Medical Equipment (DME), Ambulance etc.



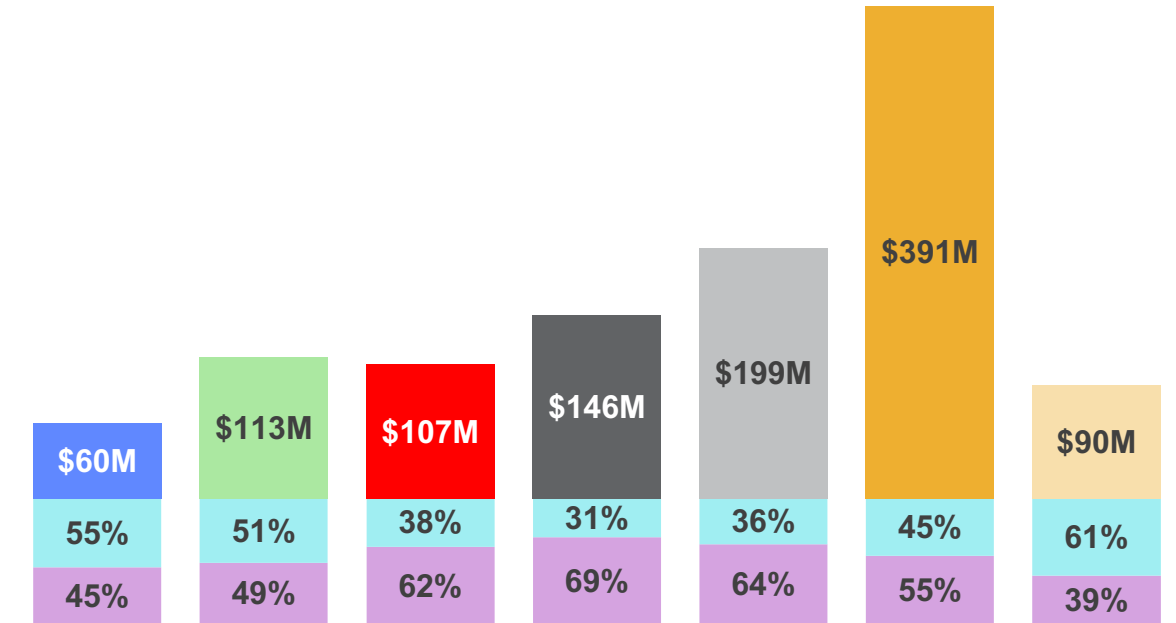
Plan Paid By Age and Gender – State Plan Active Population July 2021 – June 2022

Plan Paid By Age Band



Plan Paid By Age Band and Gender

Female Male

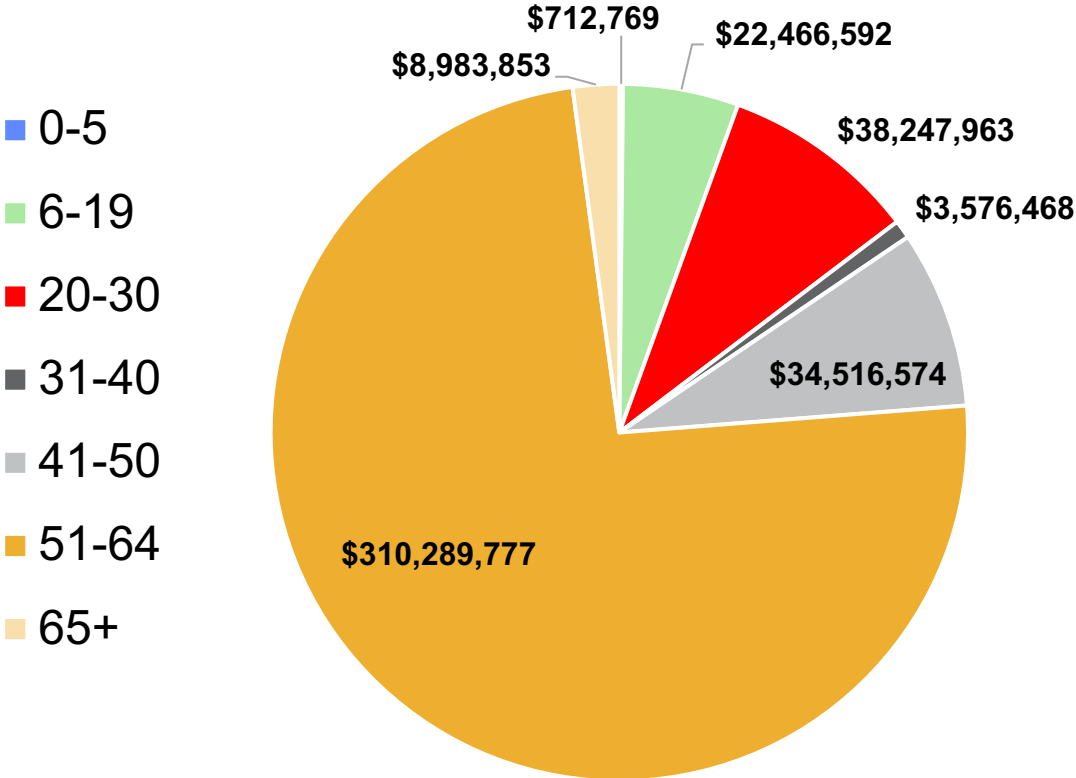


Age Band	0-5	6-19	20-30	31-40	41-50	51-64	65+
Percent Of Tot	6.3%	21.4%	14.8%	14.0%	16.2%	23.7%	3.5%
Pct of Enrollment – Male	51.7%	51.3%	49.9%	45.4%	45.1%	46.0%	56.6%
Pct of Enrollment - Female	48.3%	48.7%	50.1%	54.6%	54.9%	54.0%	43.4%

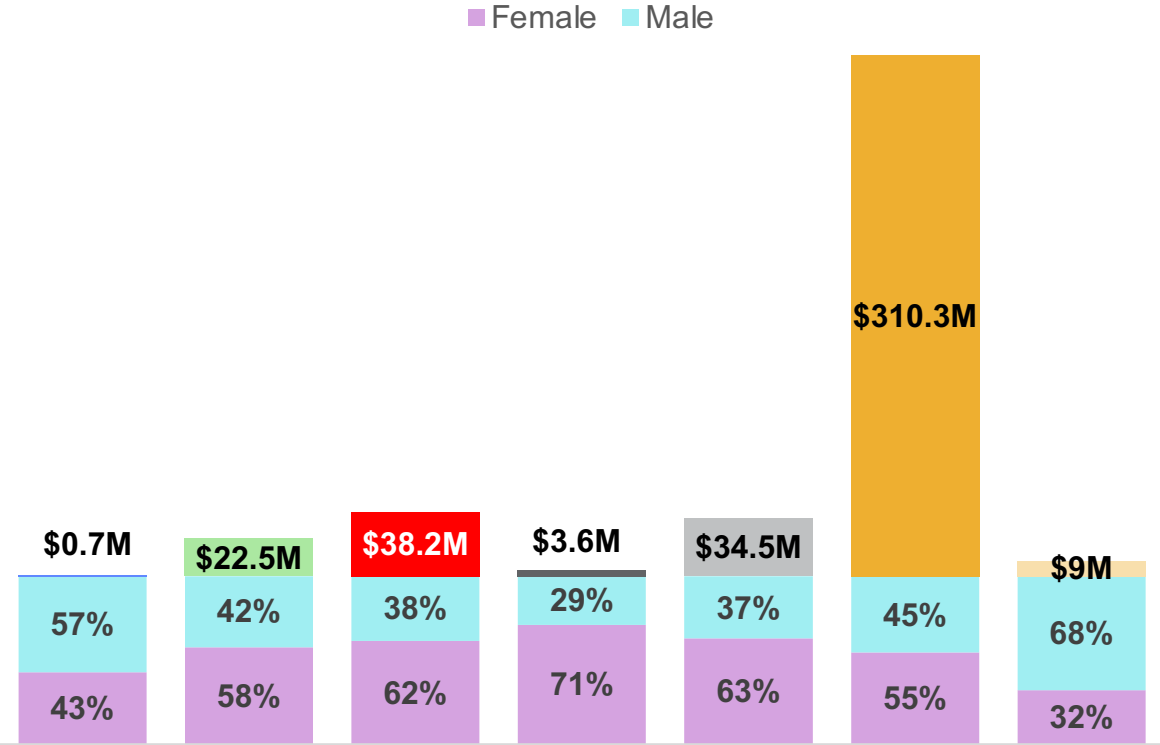


Plan Paid By Age and Gender – State Plan Non-Medicare July 2021 – June 2022

Plan Paid By Age Band



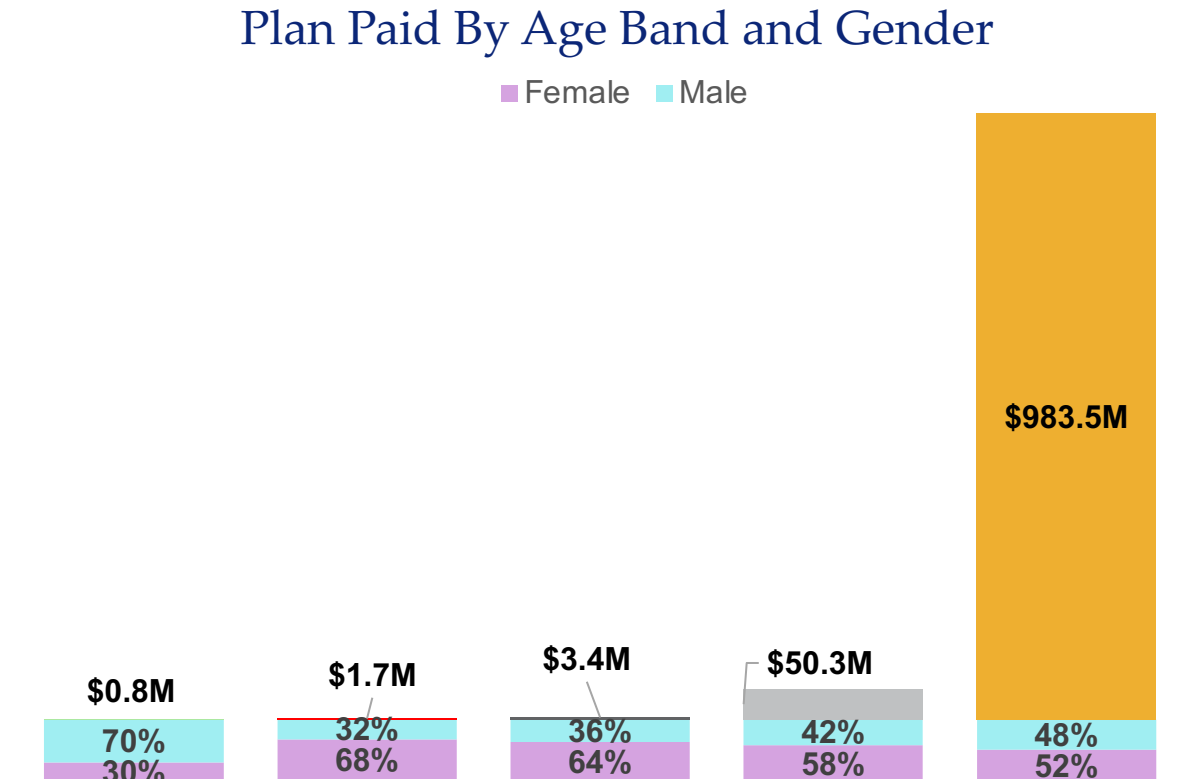
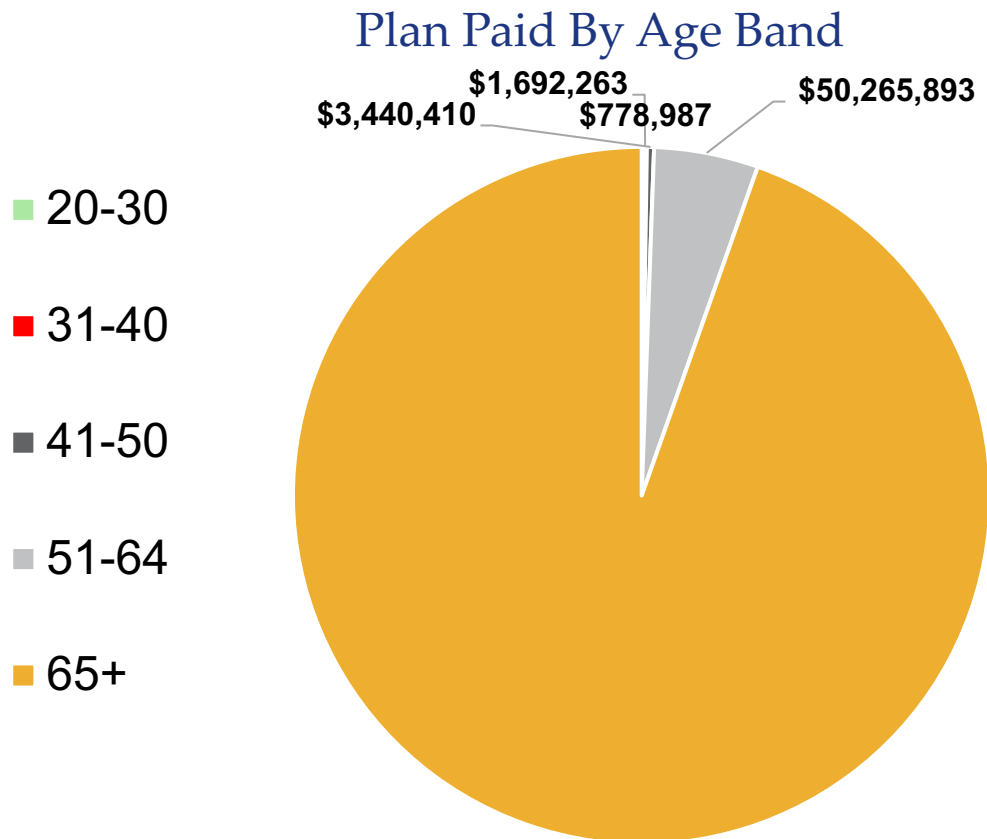
Plan Paid By Age Band and Gender



Age Band	0-5	6-19	20-30	31-40	41-50	51-64	65+
Percent Of Tot	0.1%	3.6%	5.4%	0.2%	2.3%	17.1%	0.5%
Pct of Enrollment – Male	43.1%	51.2%	49.8%	30.0%	41.5%	44.1%	50.5%
Pct of Enrollment - Female	56.9%	48.8%	50.2%	70.0%	58.5%	55.9%	49.5%



Plan Paid By Age and Gender – State Plan Medicare Retirees July 2021 – June 2022



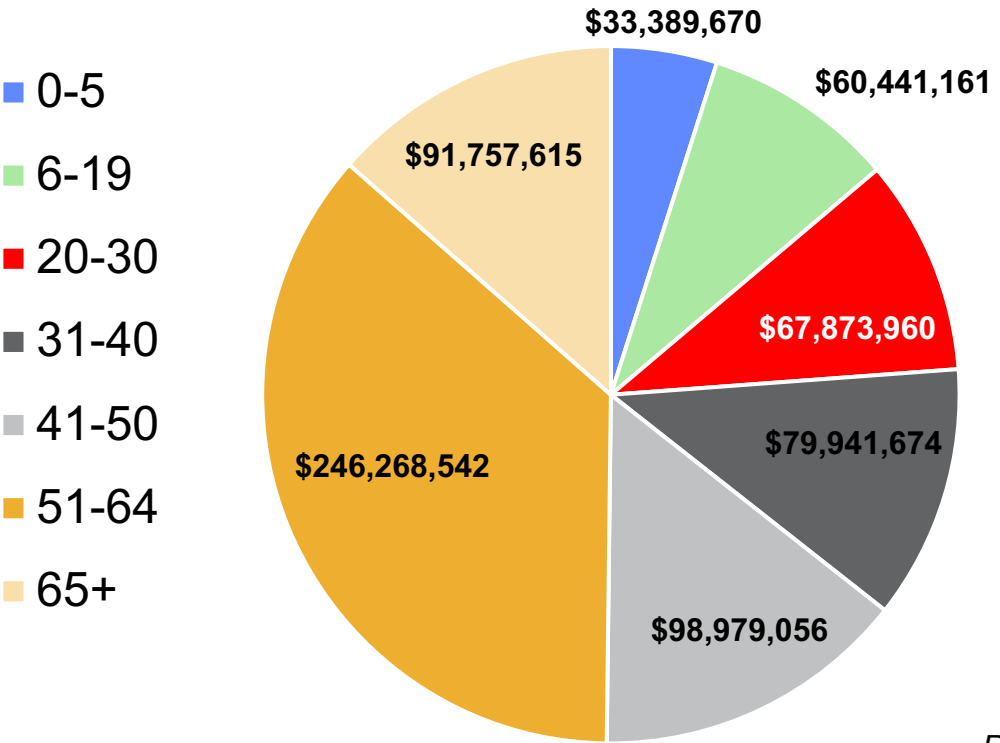
Age Band	20-30	31-40	41-50	51-64	65+
Percent Of Tot	0.0%	0.1%	0.1%	1.2%	47.0%
Pct of Enrollment – Male	57.3%	50.3%	53.1%	40.4%	43.5%
Pct of Enrollment - Female	42.7%	49.7%	46.9%	59.6%	56.5%



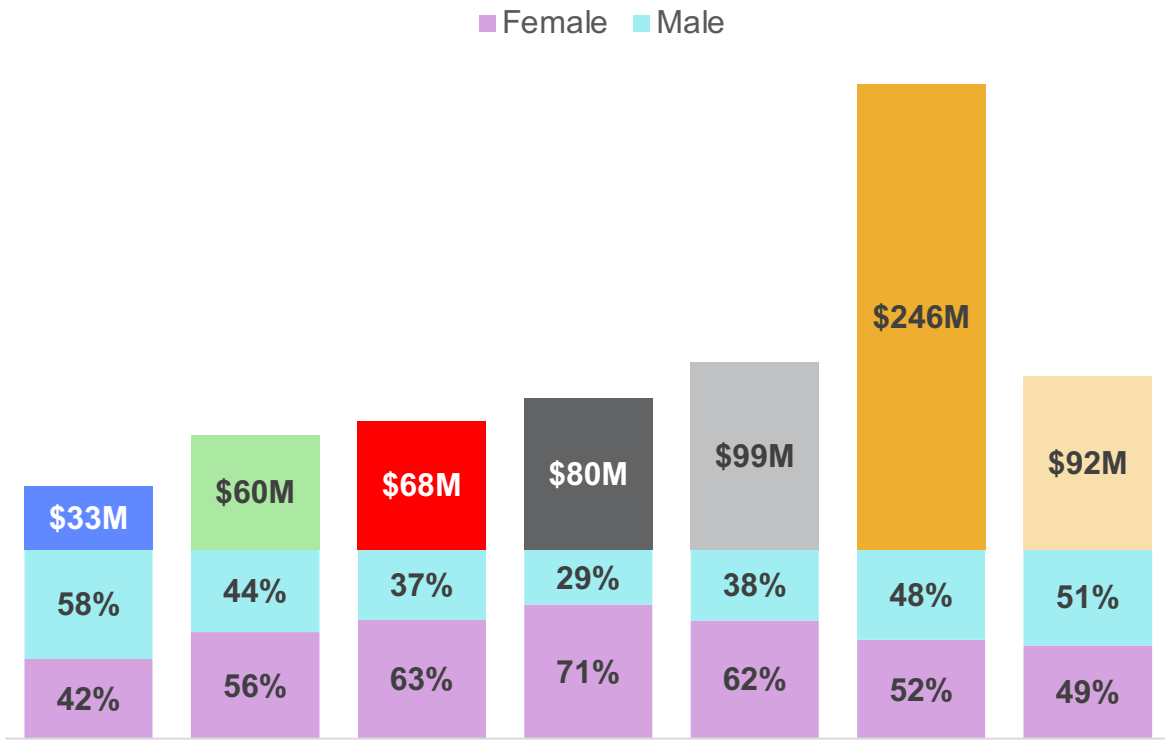
Plan Paid By Setting – Partnership Plan (includes retirees)

July 2021 – June 2022

Plan Paid By Age Band



Plan Paid By Age Band and Gender



Age Band	0-5	6-19	20-30	31-40	41-50	51-64	65+
Percent Of Tot	3.6%	11.3%	9.6%	7.8%	8.6%	14.1%	3.5%
Pct of Enrollment – Male	51.4%	51.3%	47.0%	44.6%	45.3%	45.7%	48.7%
Pct of Enrollment - Female	48.6%	48.7%	53.0%	55.4%	54.7%	54.3%	51.3%

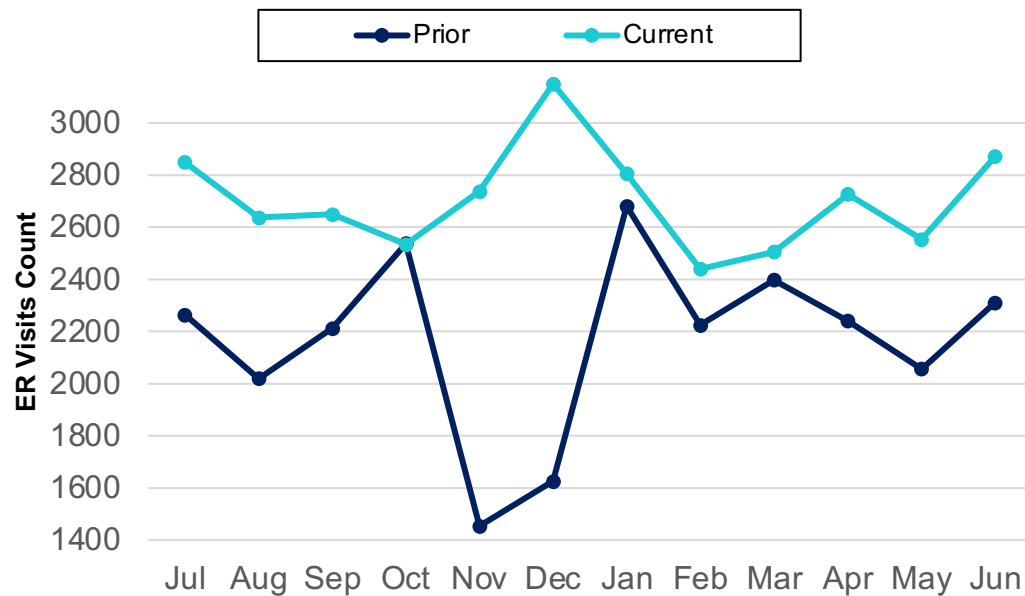
As results for Partnership retirees become more credible, they will be reported separately.



Emergency Room Visits - State Plan Active Population

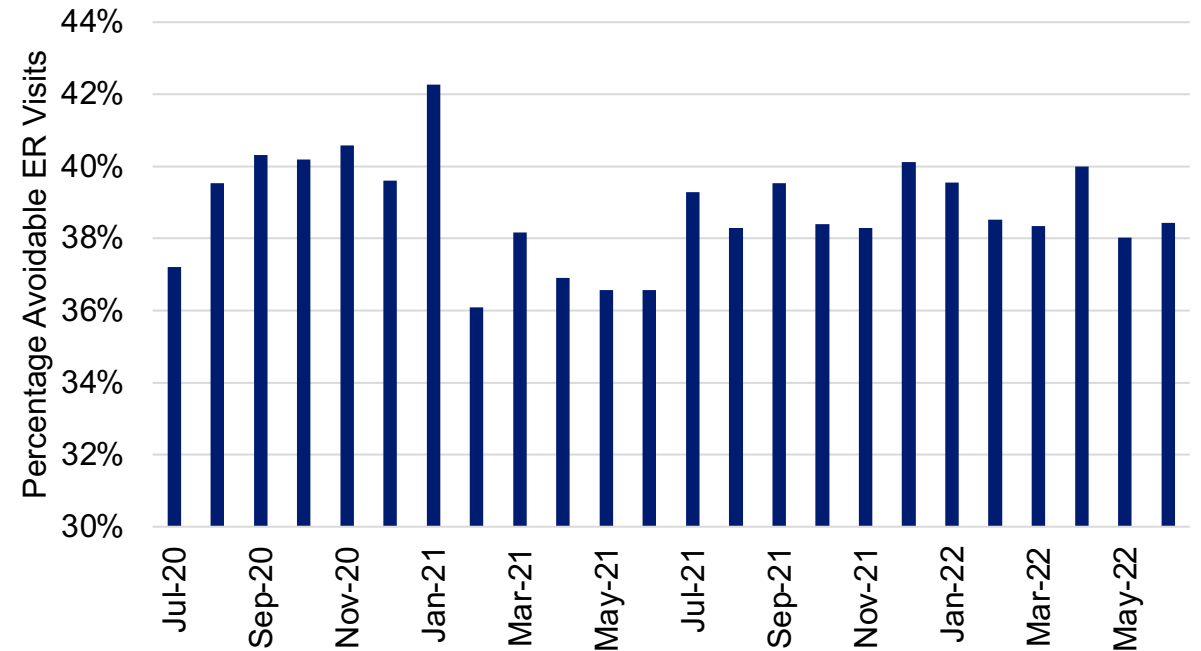
July 2021 – June 2022 (Current Period) ; July 2020 – June 2021 (Prior Period)

ER Visits Per Month



State Fiscal Year	Total ER Visits	Visits per 1,000 Covered Lives
Current	32,456	281
Prior	26,024	218

Avoidable ER Visits*



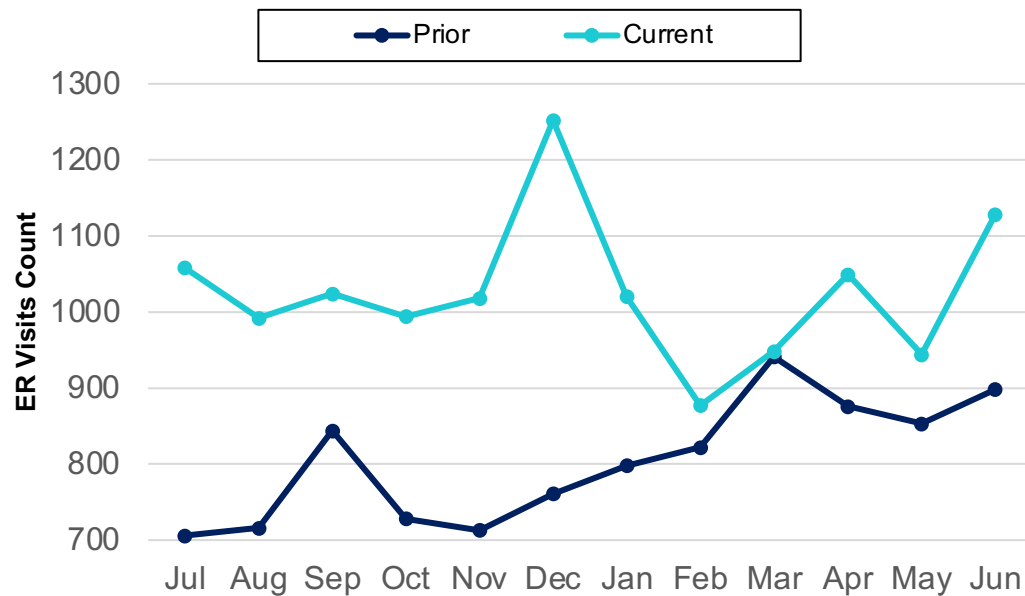
*Avoidable ER visits are those that could have been handled in a non-acute setting (e.g., a doctor's office, clinic, urgent care facility or telehealth)



Emergency Room Visits - State Plan Non-Medicare Retirees

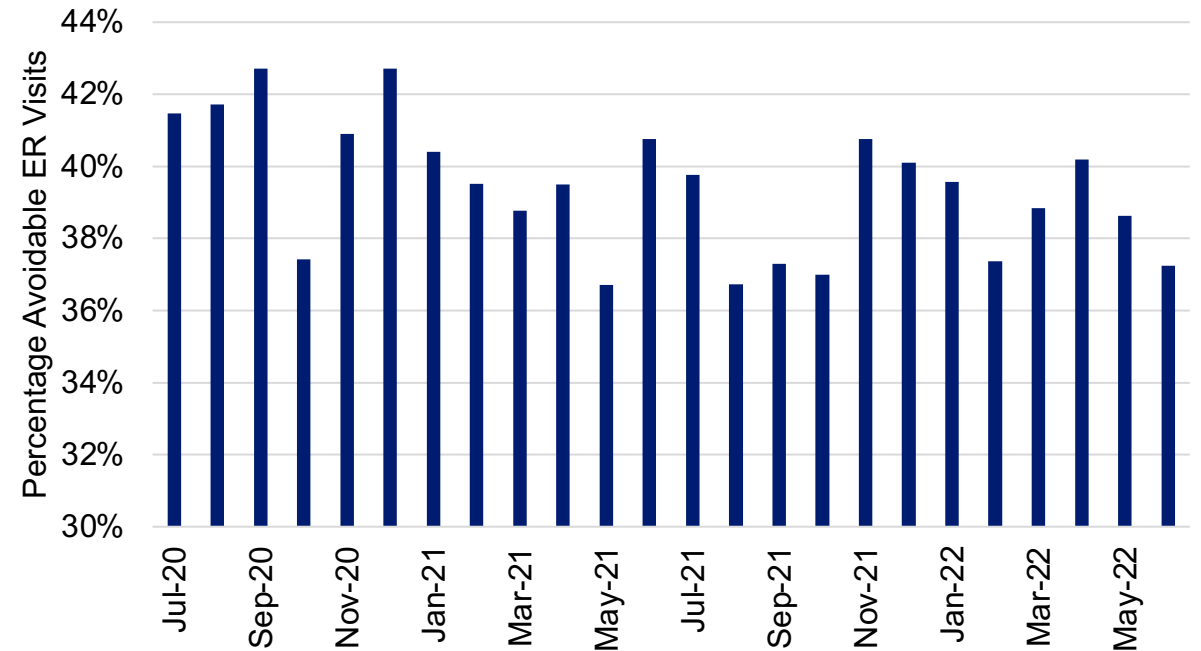
July 2021 – June 2022 (Current Period) ; July 2020 – June 2021 (Prior Period)

ER Visits Per Month



State Fiscal Year	Total ER Visits	Visits per 1,000 Covered Lives
Current	12,304	365
Prior	9,656	292

Avoidable ER Visits*



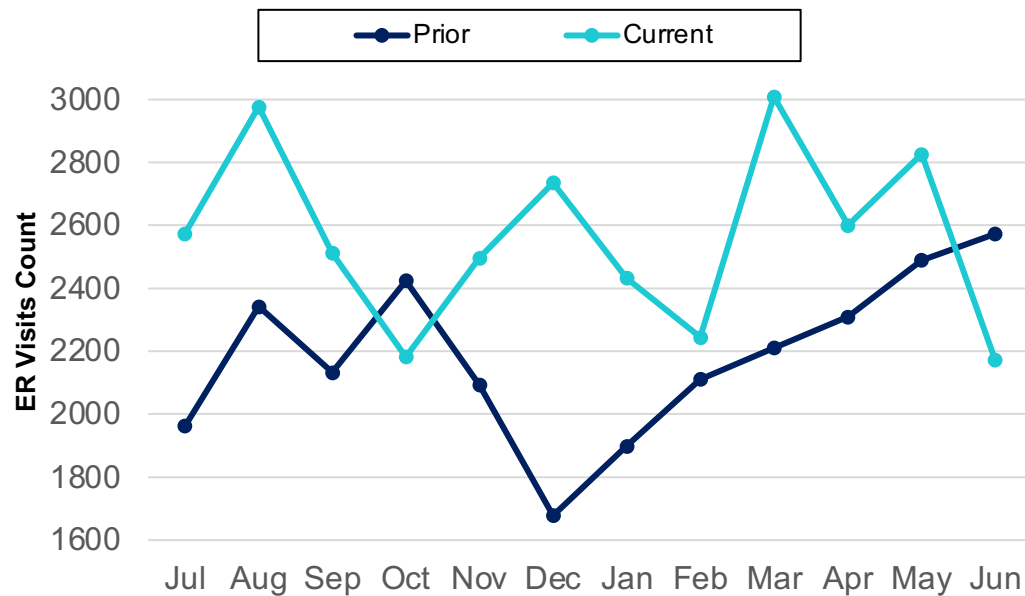
*Avoidable ER visits are those that could have been handled in a non-acute setting (e.g., a doctor's office, clinic, urgent care facility or telehealth)



Emergency Room Visits - State Plan Medicare Retirees

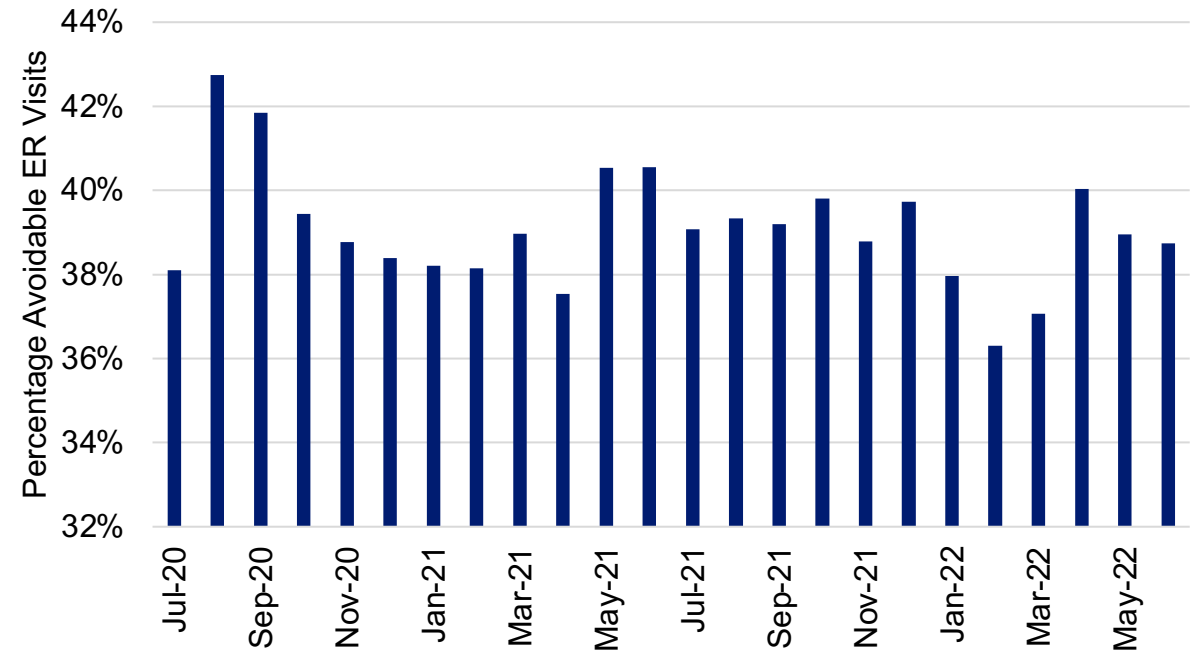
July 2021 – June 2022 (Current Period) ; July 2020 – June 2021 (Prior Period)

ER Visits Per Month



State Fiscal Year	Total ER Visits	Visits per 1,000 Covered Lives
Current	30,765	549
Prior	26,228	480

Avoidable ER Visits*



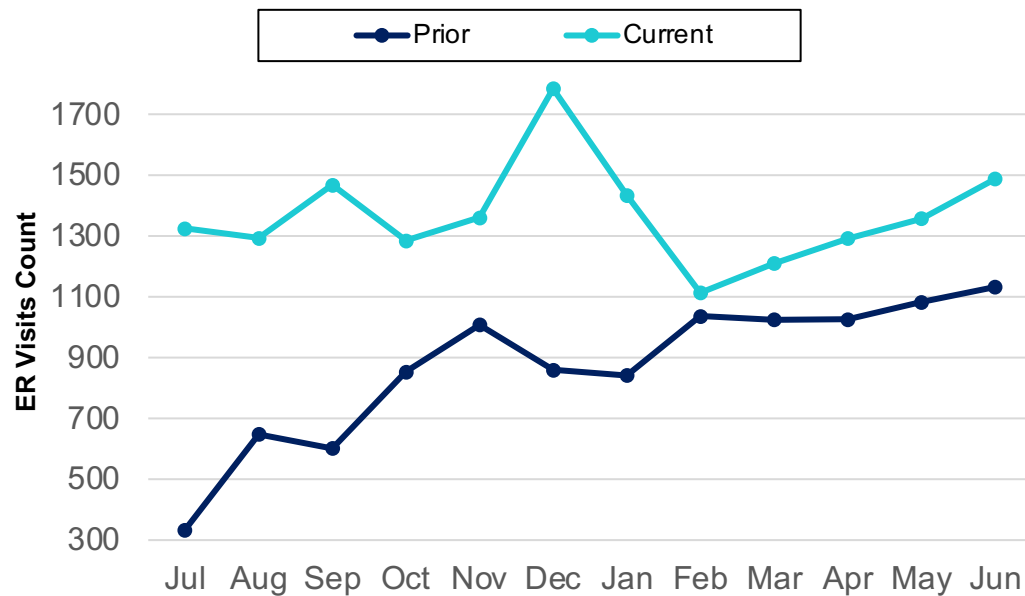
*Avoidable ER visits are those that could have been handled in a non-acute setting (e.g., a doctor's office, clinic, urgent care facility or telehealth)



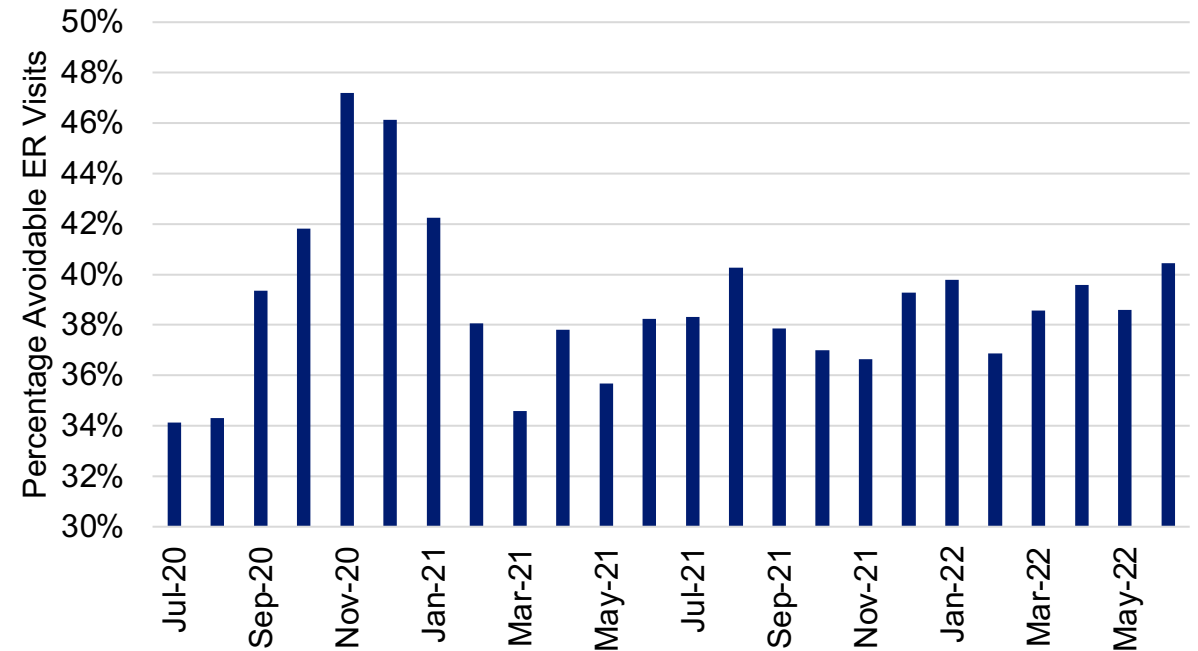
Emergency Room Visits - Partnership Plan (includes retirees)

July 2021 – June 2022 (Current Period) ; July 2020 – June 2021 (Prior Period)

ER Visits Per Month



Avoidable ER Visits*



State Fiscal Year	Total ER Visits	Visits per 1,000 Covered Lives
Current	16,408	242
Prior	10,447	168

*Avoidable ER visits are those that could have been handled in a non-acute setting (e.g., a doctor's office, clinic, urgent care facility or telehealth). As Partnership retiree membership increases, they will be reported separately.



Top 15 Drugs – State Plan Active Population

July 2021 – June 2022 By Plan Paid

Rank	Drug	Disease Indication	Total Plan Paid	Script Count	Cost Per Script
1	HUMIRA PEN	Autoimmune Disease	\$10,945,131	2,123	\$5,156
2	STELARA	Psoriasis	\$6,919,548	638	\$10,846
3	DUPIXENT	Skin Disorders	\$6,711,963	2,320	\$2,893
4	OZEMPIC	Diabetes	\$4,485,987	7,231	\$620
5	SKYRIZI	Psoriasis	\$4,478,552	340	\$13,172
6	TRIKAFTA	Cystic Fibrosis	\$3,944,885	166	\$23,764
7	VYVANSE	ADHD/Narcolepsy	\$2,978,835	9,487	\$314
8	XOLAIR	Asthma/COPD	\$2,707,035	1,193	\$2,269
9	REVLIMID	Oncology	\$2,607,736	162	\$16,097
10	EXONDYS 51	Multiple Sclerosis/Neuromuscular Disorders	\$2,126,976	48	\$44,312
11	BIKTARVY	Viral Infections/HIV AIDS	\$2,076,540	610	\$3,404
12	TRULICITY	Diabetes	\$2,029,928	3,180	\$638
13	COSENTYX SENSOREADY PEN	Psoriasis	\$1,922,552	651	\$2,953
14	HUMIRA	Autoimmune Disease	\$1,803,617	329	\$5,482
15	ENBREL SURECLICK	Autoimmune Disease	\$1,737,829	671	\$2,590



Top 15 Drugs – State Plan Non-Medicare Retirees

July 2021 – June 2022 By Plan Paid

Rank	Drug	Disease Indication	Total Plan Paid	Script Count	Cost Per Script
1	HUMIRA PEN	Autoimmune Disease	\$5,077,127	947	\$5,361
2	DUPIXENT	Skin Disorders	\$2,147,094	762	\$2,818
3	STELARA	Psoriasis	\$2,078,541	167	\$12,446
4	OZEMPIC	Diabetes	\$2,063,441	3,008	\$686
5	REVLIMID	Oncology	\$1,707,498	113	\$15,111
6	SKYRIZI	Psoriasis	\$1,565,586	111	\$14,104
7	TRIKAFTA	Cystic Fibrosis	\$1,475,033	61	\$24,181
8	TRULICITY	Diabetes	\$1,293,733	1,855	\$697
9	XOLAIR	Asthma/COPD	\$1,185,774	417	\$2,844
10	ENBREL SURECLICK	Autoimmune Disease	\$1,102,928	354	\$3,116
11	IBRANCE	Oncology	\$972,137	77	\$12,625
12	BIKTARVY	Viral Infections/HIV AIDS	\$889,555	246	\$3,616
13	VYVANSE	ADHD/Narcolepsy	\$843,244	2,609	\$323
14	ELIQUIS	Blood Disorders	\$764,557	1,615	\$473
15	JARDIANCE	Diabetes	\$760,204	2,367	\$321



Top 15 Drugs – State Plan Medicare Retirees

July 2021 – June 2022 By Plan Paid

Rank	Drug	Disease Indication	Total Plan Paid	Script Count	Cost Per Script
1	ELIQUIS	Blood Disorders	\$17,308,835	22,981	\$753
2	REVLIMID	Oncology	\$13,116,770	770	\$17,035
3	HUMIRA PEN	Autoimmune Disease	\$9,645,497	983	\$9,812
4	IMBRUVICA	Oncology	\$8,182,047	510	\$16,043
5	XARELTO	Blood Disorders	\$7,247,374	8,647	\$838
6	VYNDAMAX	Cardiovascular/Heart Disease	\$6,568,755	188	\$34,940
7	OZEMPIC	Diabetes	\$5,598,442	4,721	\$1,186
8	JANUVIA	Diabetes	\$5,592,401	6,361	\$879
9	JARDIANCE	Diabetes	\$5,482,862	5,838	\$939
10	TRULICITY	Diabetes	\$5,233,722	4,632	\$1,130
11	RESTASIS	Ophthalmology	\$5,007,367	4,436	\$1,129
12	MYRBETRIQ	Overactive Bladder/Urinary Incontinence	\$4,707,842	7,299	\$645
13	STELARA	Psoriasis	\$4,207,228	177	\$23,770
14	ENBREL SURECLICK	Autoimmune Disease	\$4,133,944	438	\$9,438
15	DUPIXENT	Skin Disorders	\$3,587,570	1,072	\$3,347



Top 15 Drugs – Partnership Plan (includes retirees)

July 2021 – June 2022 By Plan Paid

Rank	Drug	Disease Indication	Total Plan Paid	Script Count	Cost Per Script
1	HUMIRA PEN	Autoimmune Disease	\$7,321,898	1,486	\$4,927
2	DUPIXENT	Skin Disorders	\$3,428,032	1,214	\$2,824
3	STELARA	Psoriasis	\$3,355,649	301	\$11,148
4	OZEMPIC	Diabetes	\$2,339,265	3,963	\$590
5	SKYRIZI	Psoriasis	\$1,934,110	158	\$12,241
6	VYVANSE	ADHD/Narcolepsy	\$1,864,863	6,495	\$287
7	REVLIMID	Oncology	\$1,774,429	108	\$16,430
8	OTEZLA	Autoimmune Disease	\$1,207,540	508	\$2,377
9	TRIKAFTA	Cystic Fibrosis	\$1,162,419	43	\$27,033
10	TRULICITY	Diabetes	\$1,130,411	1,809	\$625
11	ENBREL SURECLICK	Autoimmune Disease	\$1,119,253	421	\$2,659
12	STRENSIQ	Rare Disorders	\$1,051,452	10	\$105,145
13	COSENTYX SENSOREADY PEN	Psoriasis	\$995,486	327	\$3,044
14	IMBRUVICA	Oncology	\$987,299	68	\$14,519
15	LATUDA	Mental Health/Neurological Disorders	\$909,090	620	\$1,466

As Partnership retiree membership increases, they will be reported separately.



Top 15 Prescription Drug Disease Indications

State Plan Active Population

July 2021 – June 2022 By Plan Paid

Rank	Disease Indication	Plan Paid	Script Count	Cost Per Script
1	Autoimmune Disease	\$23,974,510	7,576	\$3,165
2	Oncology	\$15,558,043	6,126	\$2,540
3	Psoriasis	\$15,213,921	2,485	\$6,122
4	Diabetes	\$13,807,093	51,415	\$269
5	Skin Disorders	\$11,400,572	54,416	\$210
6	Multiple Sclerosis/Neuromuscular Disorders	\$9,604,095	1,479	\$6,494
7	Asthma/COPD	\$9,059,966	62,163	\$146
8	ADHD/Narcolepsy	\$7,752,494	40,672	\$191
9	Viral Infections/HIV AIDS	\$6,781,870	3,162	\$2,145
10	Cystic Fibrosis	\$5,222,483	358	\$14,588
11	Vaccines/Immunizing Agents	\$5,179,349	97,509	\$53
12	Blood Disorders	\$4,706,109	9,242	\$509
13	Mental Health/Neurological Disorders	\$4,435,229	11,924	\$372
14	Depression	\$3,688,605	88,083	\$42
15	Seizure Disorder	\$3,674,079	33,433	\$110



Top 15 Prescription Drug Disease Indications

State Plan Non-Medicare Retirees

July 2021 – June 2022 By Plan Paid

Rank	Disease Indication	Plan Paid	Script Count	Cost Per Script
1	Autoimmune Disease	\$10,954,713	3,288	\$3,332
2	Oncology	\$9,537,828	2,975	\$3,206
3	Diabetes	\$8,583,516	28,014	\$306
4	Psoriasis	\$5,520,983	831	\$6,644
5	Asthma/COPD	\$4,349,670	24,236	\$179
6	Multiple Sclerosis/Neuromuscular Disorders	\$4,077,701	743	\$5,488
7	Skin Disorders	\$3,969,076	19,279	\$206
8	ADHD/Narcolepsy	\$2,464,245	10,603	\$232
9	Blood Disorders	\$2,410,621	5,671	\$425
10	Viral Infections/HIV AIDS	\$2,392,046	1,031	\$2,320
11	Vaccines/Immunizing Agents	\$2,274,693	35,902	\$63
12	Lipid/Cholesterol Disorders	\$1,979,537	38,600	\$51
13	Depression	\$1,971,092	37,032	\$53
14	Mental Health/Neurological Disorders	\$1,914,647	6,174	\$310
15	Cardiovascular/Hypertension	\$1,744,860	70,898	\$25



Top 15 Prescription Drug Disease Indications

State Plan Medicare Retirees

July 2021 – June 2022 By Plan Paid

Rank	Disease Indication	Plan Paid	Script Count	Cost Per Script
1	Oncology	\$57,710,266	12,215	\$4,725
2	Diabetes	\$50,163,160	91,295	\$549
3	Blood Disorders	\$34,663,616	52,519	\$660
4	Autoimmune Disease	\$29,762,199	6,476	\$4,596
5	Asthma/COPD	\$23,275,869	70,944	\$328
6	Cardiovascular/Heart Disease	\$15,681,589	19,903	\$788
7	Psoriasis	\$12,399,112	1,367	\$9,070
8	Cardiovascular/Hypertension	\$11,901,036	321,345	\$37
9	Multiple Sclerosis/Neuromuscular Disorders	\$10,101,042	1,278	\$7,904
10	Lipid/Cholesterol Disorders	\$9,979,046	161,959	\$62
11	Skin Disorders	\$8,785,828	40,350	\$218
12	Vaccines/Immunizing Agents	\$8,333,491	54,518	\$153
13	Glaucoma	\$7,048,129	31,007	\$227
14	Ophthalmology	\$6,868,368	12,721	\$540
15	Overactive Bladder/Urinary Incontinence	\$6,523,327	16,613	\$393



Top 15 Prescription Drug Disease Indications

Partnership Plan (includes retirees)

July 2021 – June 2022 By Plan Paid

Rank	Disease Indication	Plan Paid	Script Count	Cost Per Script
1	Autoimmune Disease	\$15,130,566	4,985	\$3,035
2	Oncology	\$11,943,335	4,017	\$2,973
3	Diabetes	\$7,705,996	30,560	\$252
4	Psoriasis	\$7,422,819	1,240	\$5,986
5	Skin Disorders	\$6,568,547	31,985	\$205
6	Asthma/COPD	\$4,081,866	32,525	\$125
7	Multiple Sclerosis/Neuromuscular Disorders	\$3,811,556	752	\$5,069
8	Vaccines/Immunizing Agents	\$3,760,776	63,233	\$59
9	ADHD/Narcolepsy	\$3,748,712	25,130	\$149
10	Viral Infections/HIV AIDS	\$3,024,285	1,629	\$1,857
11	Mental Health/Neurological Disorders	\$2,665,090	6,923	\$385
12	Rare Disorders	\$2,498,599	890	\$2,807
13	Blood Disorders	\$2,373,186	6,650	\$357
14	Lipid/Cholesterol Disorders	\$2,064,533	51,954	\$40
15	Migraine	\$2,056,108	9,015	\$228

As Partnership retiree membership increases, they will be reported separately.



Top 15 Medical Diagnosis Categories

State Plan Active Population

July 2021 – June 2022 By Plan Paid

Rank	Diagnosis Description	Plan Paid
1	Encounter for screening for malignant neoplasms	\$28,226,669
2	Encounter for other aftercare and medical care ¹	\$27,462,132
3	Contact with and (suspected) exposure to communicable diseases	\$25,898,664
4	Encounter for general examination without complaint, suspected or reported diagnosis ²	\$22,958,958
5	Multiple sclerosis	\$19,139,179
6	Liveborn infants according to place of birth and type of delivery	\$14,143,683
7	Dorsalgia	\$13,989,760
8	Major depressive disorder, recurrent	\$11,785,883
9	Other anxiety disorders	\$11,776,391
10	Encounter for other special examination without complaint, suspected or reported diagnosis	\$10,848,665
11	Osteoarthritis of knee	\$10,502,107
12	Reaction to severe stress, and adjustment disorders	\$10,111,712
13	Other sepsis	\$9,911,658
14	Other joint disorder, not elsewhere classified	\$9,892,686
15	Abdominal and pelvic pain	\$9,209,737

¹This category captures admissions for cancer treatment, including chemotherapy, immunotherapy, and radiation therapy, as well as monitoring certain drug levels for patients on long-term drug therapy.

²This category captures routine physicals, well-child visits, and other general health examinations in patients who are currently not symptomatic.



Top 15 Medical Diagnosis Categories

State Plan Non-Medicare Retirees

July 2021 – June 2022 By Plan Paid

Rank	Diagnosis Description	Plan Paid
1	Encounter for other aftercare and medical care ¹	\$17,078,595
2	Encounter for screening for malignant neoplasms	\$11,426,670
3	Osteoarthritis of knee	\$5,798,597
4	Encounter for general examination without complaint, suspected or reported diagnosis ²	\$5,714,879
5	Dorsalgia	\$5,632,837
6	Multiple sclerosis	\$5,514,076
7	Other sepsis	\$5,073,008
8	Contact with and (suspected) exposure to communicable diseases	\$4,535,714
9	Chronic ischemic heart disease	\$4,423,369
10	Osteoarthritis of hip	\$4,241,811
11	Other spondylopathies	\$4,093,872
12	Other joint disorder, not elsewhere classified	\$3,955,092
13	Alcohol related disorders	\$3,819,027
14	Encounter for other special examination without complaint, suspected or reported diagnosis	\$3,589,142
15	Pain in throat and chest	\$3,582,943

¹This category captures admissions for cancer treatment, including chemotherapy, immunotherapy, and radiation therapy, as well as monitoring certain drug levels for patients on long-term drug therapy.

²This category captures routine physicals, well-child visits, and other general health examinations in patients who are currently not symptomatic.



Top 15 Medical Diagnosis Categories

State Plan Medicare Retirees

July 2021 – June 2022 By Plan Paid

Rank	Diagnosis Description	Plan Paid
1	Encounter for other aftercare and medical care ¹	\$30,635,517
2	Other sepsis	\$23,431,875
3	Osteoarthritis of knee	\$14,444,013
4	Type 2 diabetes mellitus	\$11,463,726
5	Atrial fibrillation and flutter	\$10,557,509
6	Chronic kidney disease (CKD)	\$9,808,927
7	Chronic ischemic heart disease	\$9,715,483
8	Other retinal disorders	\$9,078,289
9	Fracture of femur	\$8,944,337
10	Other spondylopathies	\$8,570,735
11	Age-related cataract	\$8,403,790
12	Encounter for general examination without complaint, suspected or reported diagnosis ²	\$8,178,031
13	Encounter for screening for malignant neoplasms	\$7,859,498
14	Dorsalgia	\$7,844,471
15	Hypertensive heart and chronic kidney disease	\$7,511,154

¹This category captures admissions for cancer treatment, including chemotherapy, immunotherapy, and radiation therapy, as well as monitoring certain drug levels for patients on long-term drug therapy.

²This category captures routine physicals, well-child visits, and other general health examinations in patients who are currently not symptomatic.



Top 15 Medical Diagnosis Categories

Partnership Plan (includes retirees)

July 2021 – June 2022 By Plan Paid

Rank	Diagnosis Description	Plan Paid
1	Encounter for other aftercare and medical care ¹	\$23,074,461
2	Encounter for screening for malignant neoplasms	\$17,750,044
3	Contact with and (suspected) exposure to communicable diseases	\$15,286,270
4	Encounter for general examination without complaint, suspected or reported diagnosis ²	\$14,147,759
5	Liveborn infants according to place of birth and type of delivery	\$8,600,518
6	Dorsalgia	\$8,354,655
7	Multiple sclerosis	\$8,184,780
8	Other sepsis	\$7,969,590
9	Other anxiety disorders	\$7,453,687
10	Malignant neoplasm of breast	\$7,242,496
11	Encounter for other special examination without complaint, suspected or reported diagnosis	\$6,916,755
12	Osteoarthritis of knee	\$6,626,554
13	Major depressive disorder, recurrent	\$6,141,047
14	Reaction to severe stress, and adjustment disorders	\$5,899,318
15	Other joint disorder, not elsewhere classified	\$5,563,226

¹This category captures admissions for cancer treatment, including chemotherapy, immunotherapy, and radiation therapy, as well as monitoring certain drug levels for patients on long-term drug therapy.

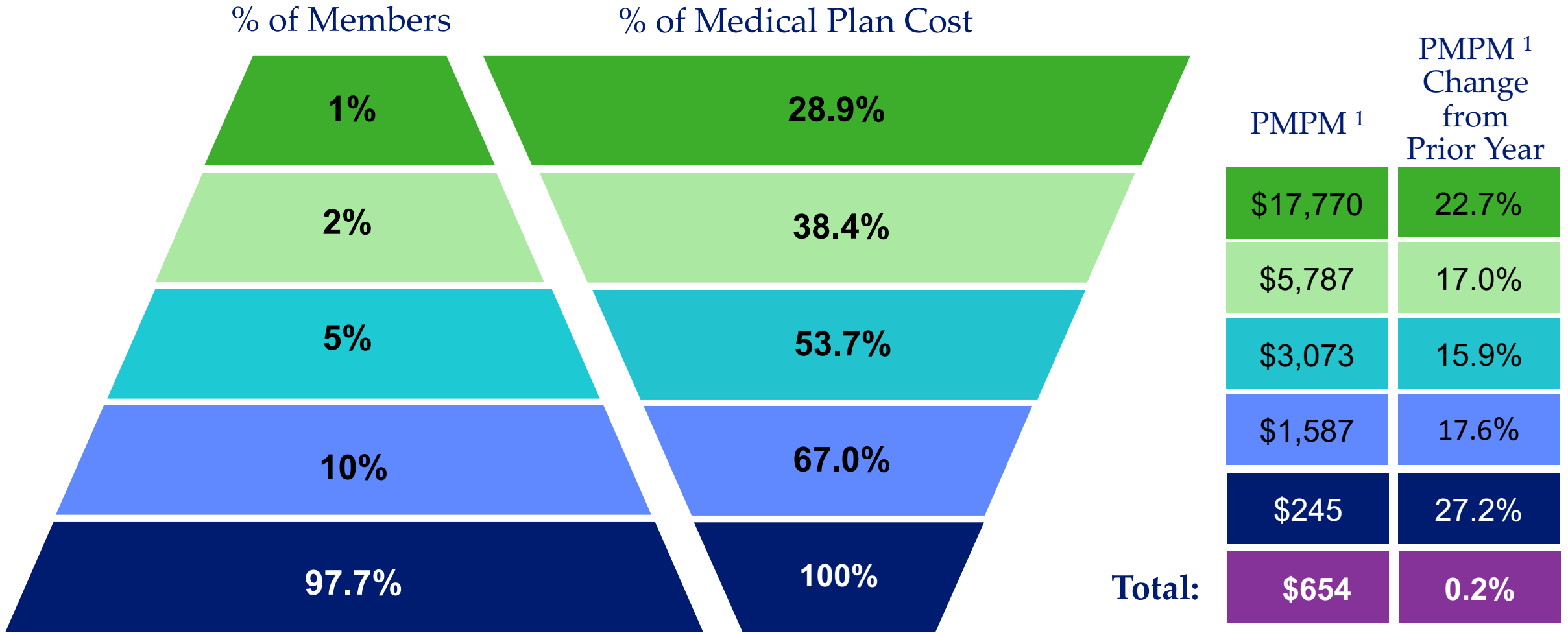
²This category captures routine physicals, well-child visits, and other general health examinations in patients who are currently not symptomatic.

As Partnership retiree membership increases, they will be reported separately.



Distribution of Medical Claims By Membership

July 2021 – June 2022 By Plan Paid– State Plan Active Population

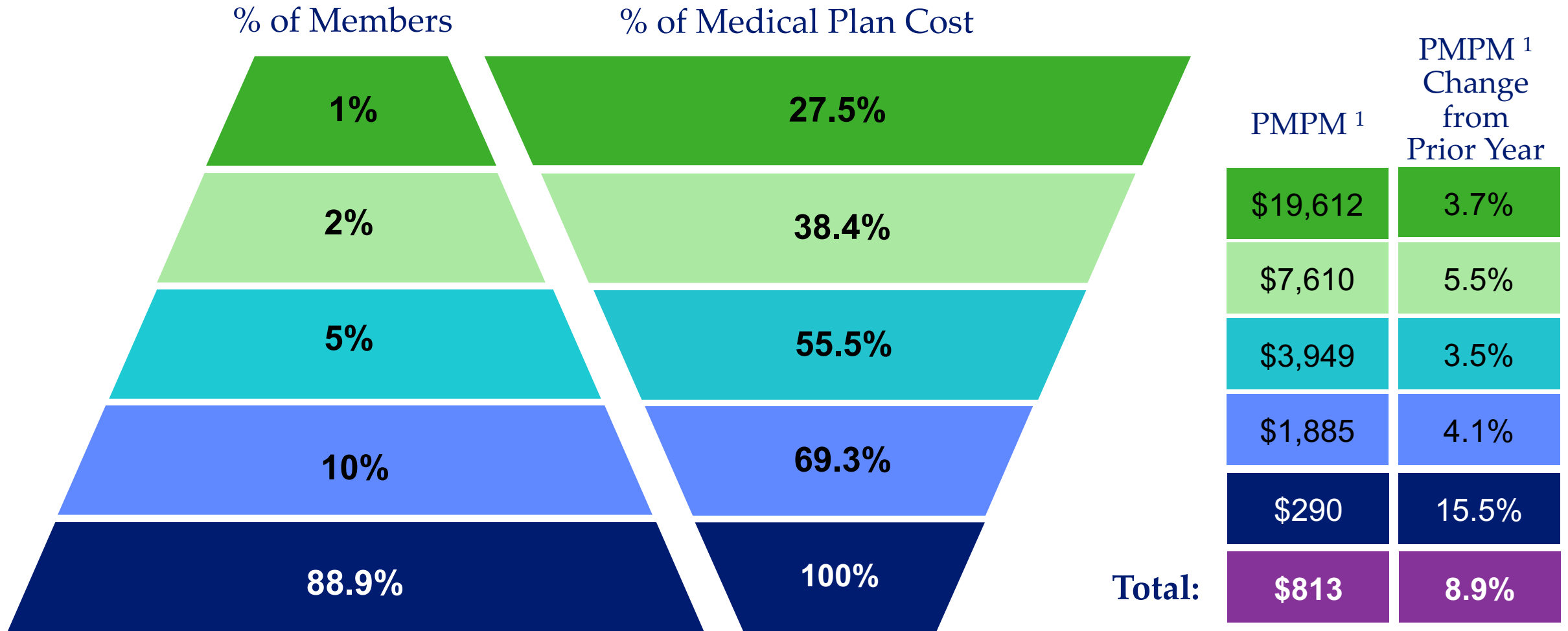


¹ Per Member Per Month



Distribution of Medical Claims By Membership

July 2021 – June 2022 By Plan Paid– State Plan Non-Medicare Population

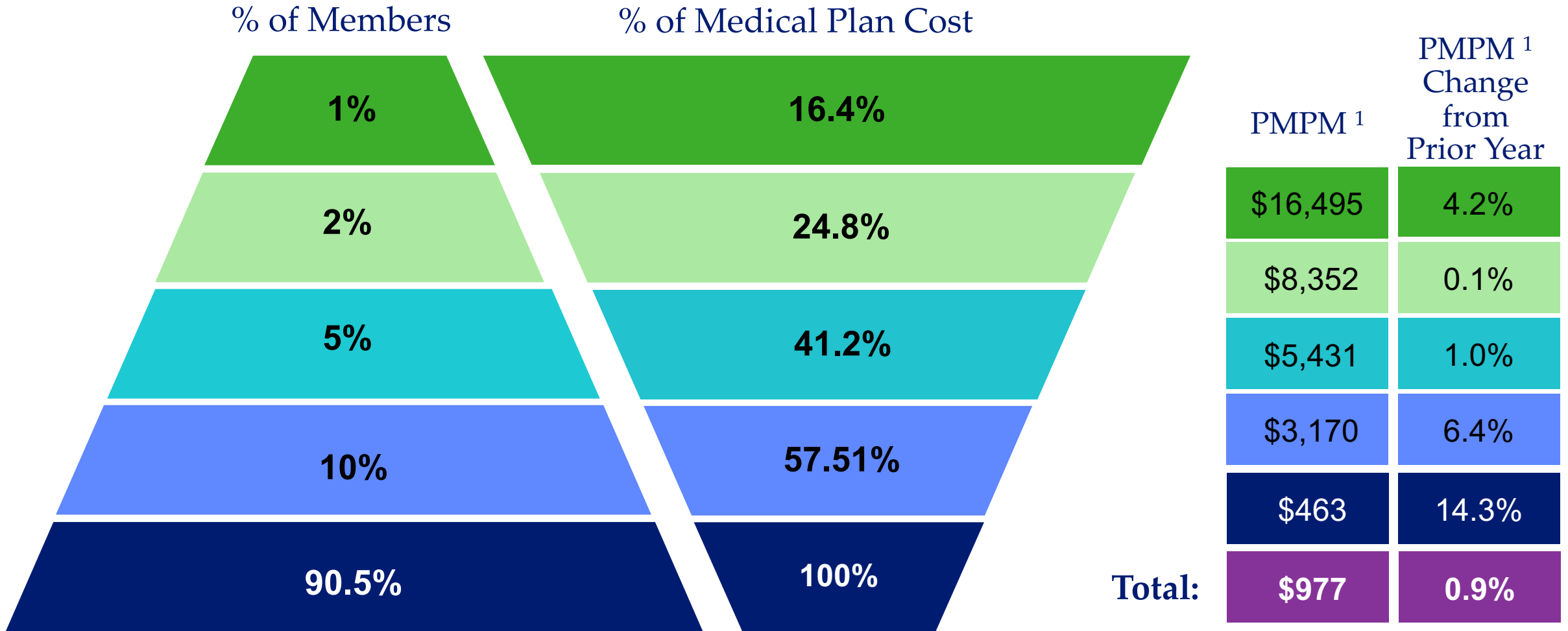


¹ Per Member Per Month



Distribution of Medical Claims By Membership

July 2021 – June 2022 By Plan Paid– State Plan Medicare Population

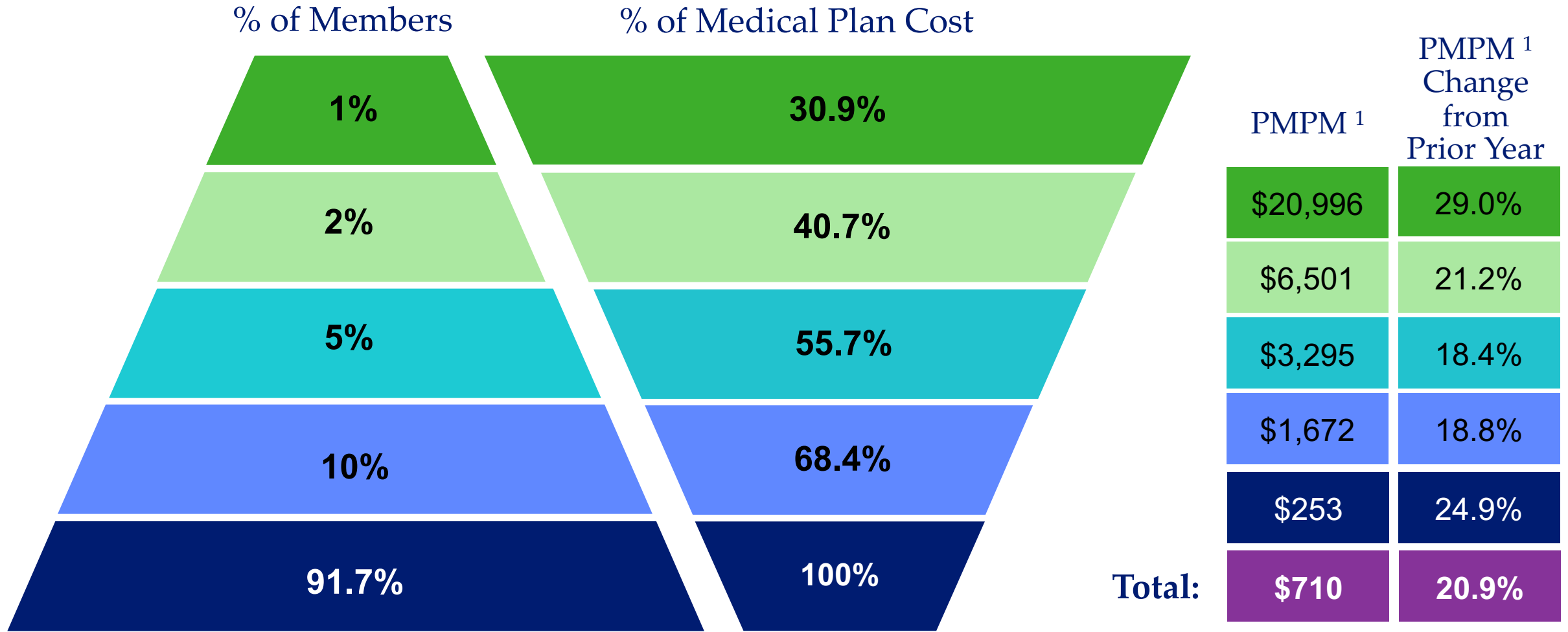


¹ Per Member Per Month



Distribution of Medical Claims By Membership

July 2021 – June 2022 By Plan Paid– Partnership Plan (includes retirees)



¹ Per Member Per Month

As Partnership retiree membership increases, they will be reported separately.

